

# ANYA 2

ARABIAN RANCHES III

---

FLOOR PLANS

---

**FS**  
REAL ESTATE  
STAY AHEAD, INVEST SMART

**db**  
DUBRICKS  
POSSIBILITIES ARE LIMITLESS

EMAAR

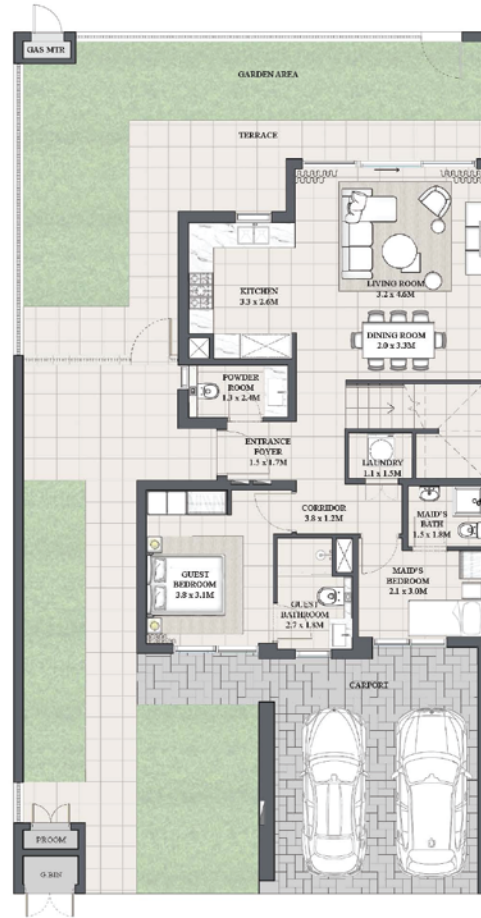
# ANYA 2

ARABIAN RANCHES III

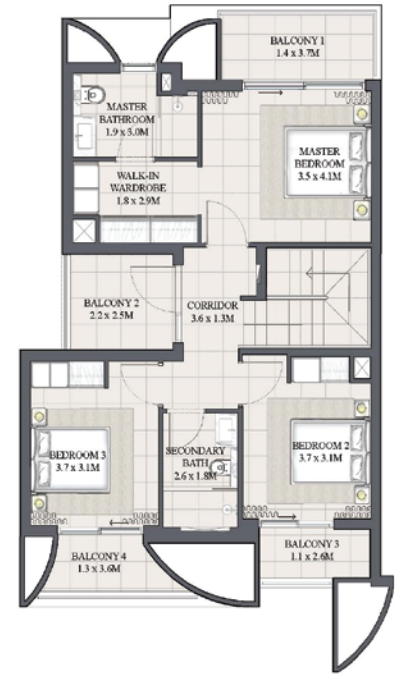
## LUNA TOWNHOUSE 4 BEDROOM 1

UNIT	TOTAL AREA	
4 PLEX - TH01		
6 PLEX - TH01	2376.45 SQFT	220.78 SQM
8 PLEX - TH01		

### KEY PLAN



GROUND FLOOR



FIRST FLOOR

FLOOR PLAN 1. All dimensions are in imperial and metric, and measured from finish to finish excluding construction tolerances. 2. All materials, dimensions, and drawings are approximate only. 3. Information is subject to change without notice, at developer's absolute discretion. 4. Actual area may vary from the stated area. 5. Drawings not to scale. 6. All images used are for illustrative purposes only and do not represent the actual size, features, specifications, fittings, and furnishings. 7. The developer reserves the right to make revisions / alterations, at its absolute discretion, without any liability whatsoever.

EMAAR

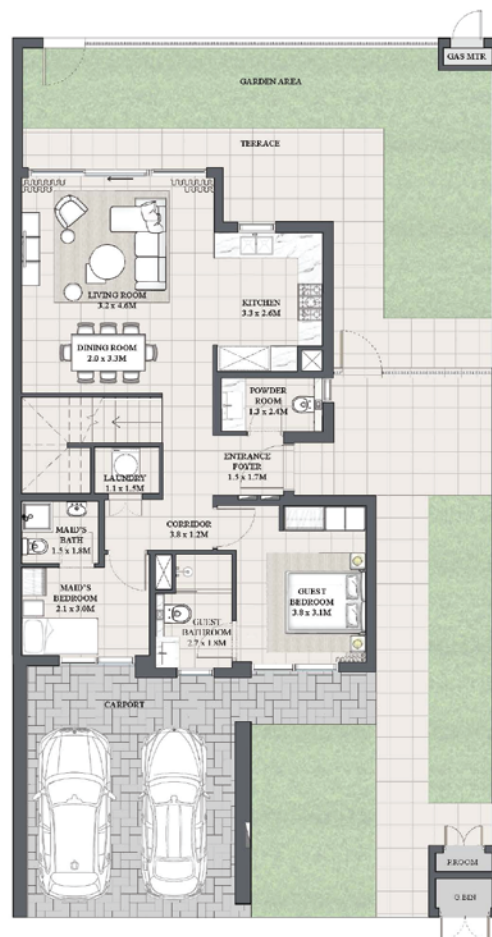
# ANYA 2

ARABIAN RANCHES III

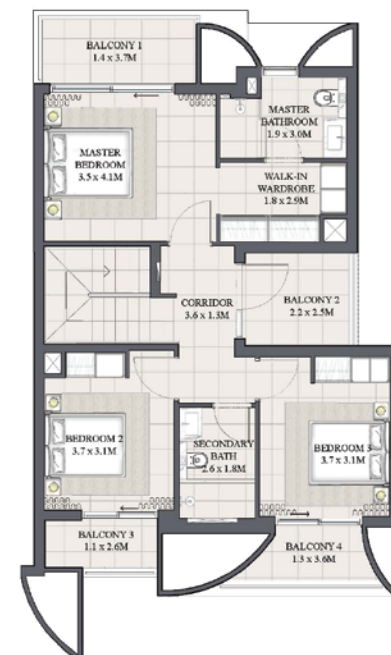
## LUNA TOWNHOUSE 4 BEDROOM 1 M MIRRORED

UNIT	TOTAL AREA	
4 PLEX - TH04		
6 PLEX - TH06	2376.45 SQFT	220.78 SQM
8 PLEX - TH08		

### KEY PLAN



GROUND FLOOR



FIRST FLOOR

FLOOR PLAN 1. All dimensions are in imperial and metric, and measured from finish to finish excluding construction tolerances. 2. All materials, dimensions, and drawings are approximate only. 3. Information is subject to change without notice, at developer's absolute discretion. 4. Actual area may vary from the stated area. 5. Drawings not to scale. 6. All images used are for illustrative purposes only and do not represent the actual size, features, specifications, fittings, and furnishings. 7. The developer reserves the right to make revisions / alterations, at its absolute discretion, without any liability whatsoever.

EMAAR

# ANYA 2

ARABIAN RANCHES III

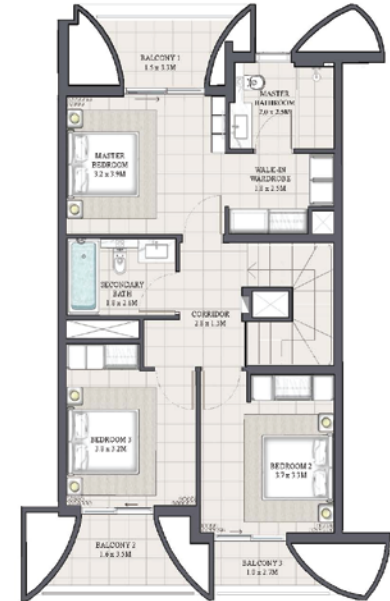
## LUNA TOWNHOUSE 3 BEDROOM 1

UNIT	TOTAL AREA	
4PLEX - TH02	1918.13 SQFT	178.20 SQM
6PLEX - TH02		
8PLEX - TH02	1917.59 SQFT	178.15 SQM

### KEY PLAN



GROUND FLOOR



FIRST FLOOR

FLOOR PLAN 1. All dimensions are in imperial and metric, and measured from finish to finish excluding construction tolerances. 2. All materials, dimensions, and drawings are approximate only. 3. Information is subject to change without notice, at developer's absolute discretion. 4. Actual area may vary from the stated area. 5. Drawings not to scale. 6. All images used are for illustrative purposes only and do not represent the actual size, features, specifications, fittings, and furnishings. 7. The developer reserves the right to make revisions / alterations, at it's absolute discretion, without any liability whatsoever.

ARABIAN RANCHES III  
LUNA  
TOWNHOUSE  
3 BEDROOM 1 M  
MIRRORED

UNIT	TOTAL AREA	
6PLEX - TH05	1917.59 SQFT	178.15 SQM
8PLEX - TH07		

4PLEX

6PLEX - TH05

6PLEX - TH07

6PLEX - TH08



### GROUND FLOOR



FIRST FLOOR

FLOOR PLAN 1. All dimensions are in imperial and metric, and measured from finish to finish excluding construction tolerances. 2. All materials, dimensions, and drawings are approximate only. 3. Information is subject to change without notice, at developer's absolute discretion. 4. Actual area may vary from the stated area. 5. Drawings not to scale. 6. All images used are for illustrative purposes only and do not represent the actual size, features, specifications, fittings, and furnishings. 7. The developer reserves the right to make revisions / alterations, at it's absolute discretion, without any liability whatsoever.

EMAAR

# ANYA 2

ARABIAN RANCHES III

LUNA

TOWNHOUSE

3 BEDROOM 2

UNIT	TOTAL AREA	
4PLEX - TH03	1913.18 SQFT	177.74 SQM

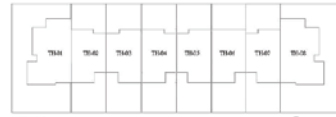
## KEY PLAN



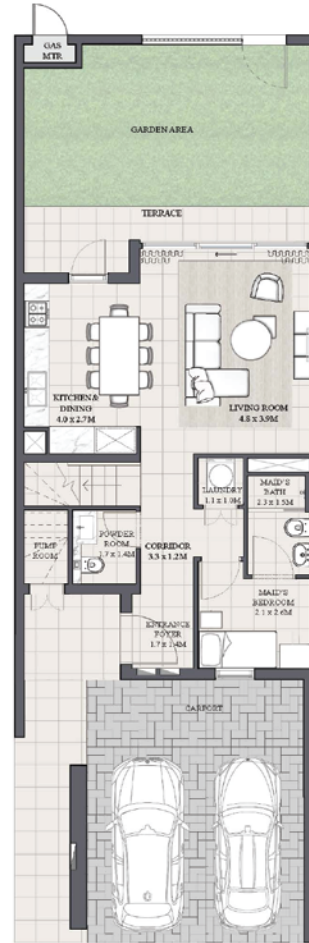
4PLEX - TH03



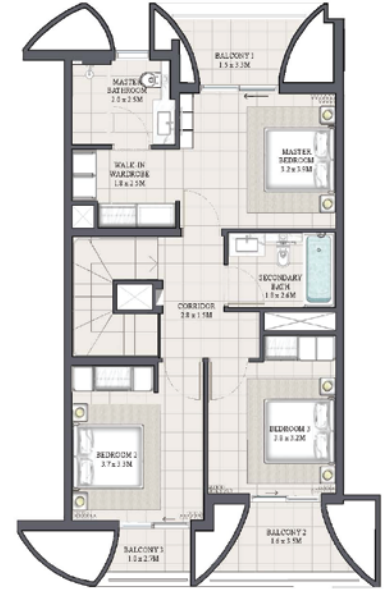
6PLEX



8PLEX



GROUND FLOOR



FIRST FLOOR

FLOOR PLAN 1. All dimensions are in imperial and metric, and measured from finish to finish excluding construction tolerances. 2. All materials, dimensions, and drawings are approximate only. 3. Information is subject to change without notice, at developer's absolute discretion. 4. Actual area may vary from the stated area. 5. Drawings not to scale. 6. All images used are for illustrative purposes only and do not represent the actual size, features, specifications, fittings, and furnishings. 7. The developer reserves the right to make revisions / alterations, at it's absolute discretion, without any liability whatsoever.

# ANYA 2

ARABIAN RANCHES III

LUNA

TOWNHOUSE

3 BEDROOM 3

UNIT	TOTAL AREA	
6 PLEX - TH03	1899.07 SQFT	176.43 SQM

## KEY PLAN



4 PLEX



6 PLEX - TH03



8 PLEX



GROUND FLOOR



FIRST FLOOR

FLOOR PLAN 1. All dimensions are in imperial and metric, and measured from finish to finish excluding construction tolerances. 2. All materials, dimensions, and drawings are approximate only. 3. Information is subject to change without notice, at developer's absolute discretion. 4. Actual area may vary from the stated area. 5. Drawings not to scale. 6. All images used are for illustrative purposes only and do not represent the actual size, features, specifications, fittings, and furnishings. 7. The developer reserves the right to make revisions / alterations, at it's absolute discretion, without any liability whatsoever.

EMAAR

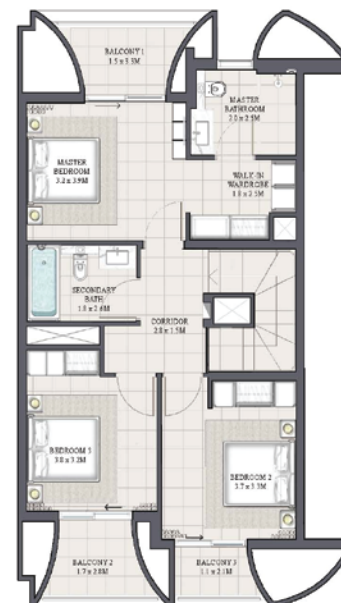
ARABIAN RANCHES III  
LUNA  
TOWNHOUSE  
3 BEDROOM 3 M  
MIRRORED

UNIT	TOTAL AREA	
6PLEX - TH04	1899.07 SQFT	176.43 SQM

### KEY PLAN



### GROUND FLOOR



FIRST FLOOR

FLOOR PLAN 1. All dimensions are in imperial and metric, and measured from finish to finish excluding construction tolerances. 2. All materials, dimensions, and drawings are approximate only. 3. Information is subject to change without notice, at developer's absolute discretion. 4. Actual area may vary from the stated area. 5. Drawings not to scale. 6. All images used are for illustrative purposes only and do not represent the actual size, features, specifications, fittings, and furnishings. 7. The developer reserves the right to make revisions / alterations, at it's absolute discretion, without any liability whatsoever.

EMAAR

# ANYA 2

ARABIAN RANCHES III

LUNA

TOWNHOUSE

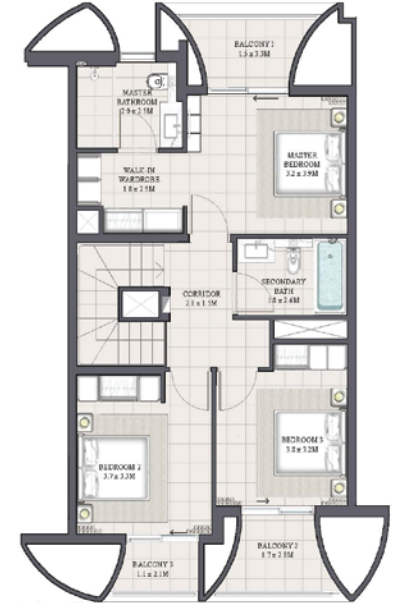
3 BEDROOM 4

UNIT	TOTAL AREA	
8 PLEX - TH03	1899.61 SQFT	176.48 SQM

## KEY PLAN



GROUND FLOOR



FIRST FLOOR

FLOOR PLAN 1. All dimensions are in imperial and metric, and measured from finish to finish excluding construction tolerances. 2. All materials, dimensions, and drawings are approximate only. 3. Information is subject to change without notice, at developer's absolute discretion. 4. Actual area may vary from the stated area. 5. Drawings not to scale. 6. All images used are for illustrative purposes only and do not represent the actual size, features, specifications, fittings, and furnishings. 7. The developer reserves the right to make revisions / alterations, at it's absolute discretion, without any liability whatsoever.

# ANYA 2

ARABIAN RANCHES III

LUNA

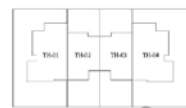
TOWNHOUSE

3 BEDROOM 4 M

MIRRORED

UNIT	TOTAL AREA	
8PLEX - TH06	1899.61 SQFT	176.48 SQM

## KEY PLAN



4PLEX



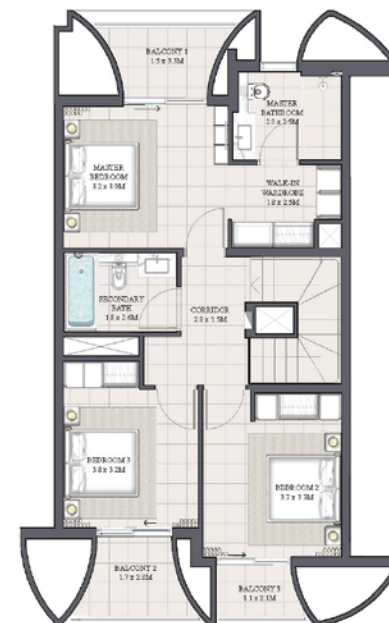
6PLEX



8PLEX - TH06



GROUND FLOOR



FIRST FLOOR

FLOOR PLAN 1. All dimensions are in imperial and metric, and measured from finish to finish excluding construction tolerances. 2. All materials, dimensions, and drawings are approximate only. 3. Information is subject to change without notice, at developer's absolute discretion. 4. Actual area may vary from the stated area. 5. Drawings not to scale. 6. All images used are for illustrative purposes only and do not represent the actual size, features, specifications, fittings, and furnishings. 7. The developer reserves the right to make revisions / alterations, at it's absolute discretion, without any liability whatsoever.

EMAAR

# ANYA 2

ARABIAN RANCHES III

LUNA

TOWNHOUSE

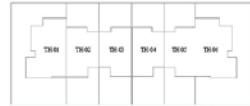
3 BEDROOM 5

UNIT	TOTAL AREA	
8PLEX - TH04	1899.29 SQFT	176.45 SQM

## KEY PLAN



4PLEX



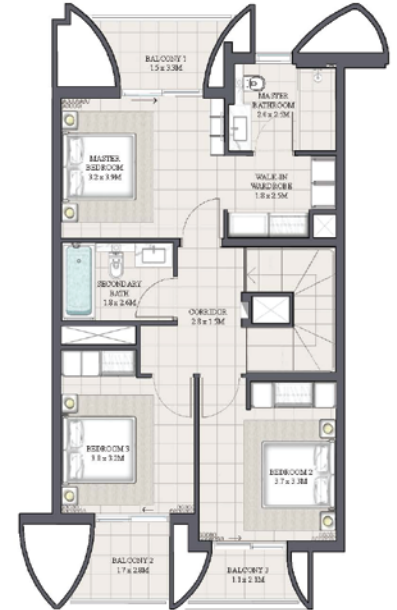
6PLEX



8PLEX - TH04



GROUND FLOOR



FIRST FLOOR

FLOOR PLAN 1. All dimensions are in imperial and metric, and measured from finish to finish excluding construction tolerances. 2. All materials, dimensions, and drawings are approximate only. 3. Information is subject to change without notice, at developer's absolute discretion. 4. Actual area may vary from the stated area. 5. Drawings not to scale. 6. All images used are for illustrative purposes only and do not represent the actual size, features, specifications, fittings, and furnishings. 7. The developer reserves the right to make revisions / alterations, at it's absolute discretion, without any liability whatsoever.

EMAAR

# ANYA 2

ARABIAN RANCHES III

LUNA

TOWNHOUSE

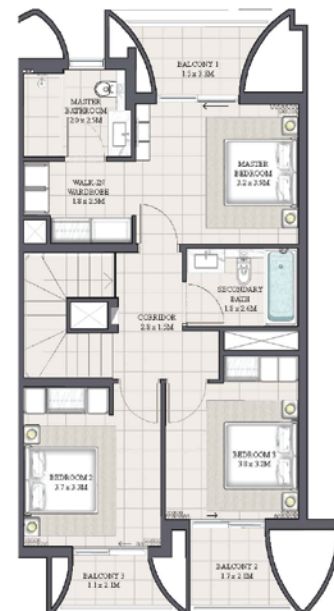
3 BEDROOM 6

UNIT	TOTAL AREA	
8PLEX - TH05	1899.72 SQFT	176.49 SQM

## KEY PLAN



GROUND FLOOR



FIRST FLOOR

FLOOR PLAN 1. All dimensions are in imperial and metric, and measured from finish to finish excluding construction tolerances. 2. All materials, dimensions, and drawings are approximate only. 3. Information is subject to change without notice, at developer's absolute discretion. 4. Actual area may vary from the stated area. 5. Drawings not to scale. 6. All images used are for illustrative purposes only and do not represent the actual size, features, specifications, fittings, and furnishings. 7. The developer reserves the right to make revisions / alterations, at it's absolute discretion, without any liability whatsoever.

EMAAR

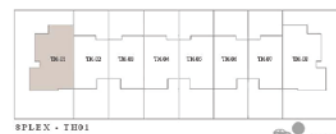
# ANYA 2

ARABIAN RANCHES III

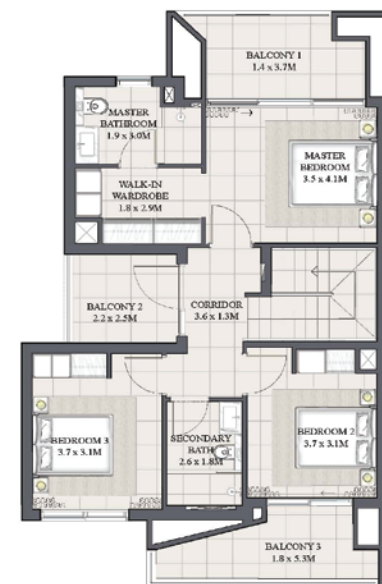
## ARIA TOWNHOUSE 4 BEDROOM 1

UNIT	TOTAL AREA	
4PLEX - TH01		
6PLEX - TH01	2462.67 SQFT	228.79 SQM
8PLEX - TH01		

### KEY PLAN



GROUND FLOOR



FIRST FLOOR

FLOOR PLAN 1. All dimensions are in imperial and metric, and measured from finish to finish excluding construction tolerances. 2. All materials, dimensions, and drawings are approximate only. 3. Information is subject to change without notice, at developer's absolute discretion. 4. Actual area may vary from the stated area. 5. Drawings not to scale. 6. All images used are for illustrative purposes only and do not represent the actual size, features, specifications, fittings, and furnishings. 7. The developer reserves the right to make revisions / alterations, at its absolute discretion, without any liability whatsoever.

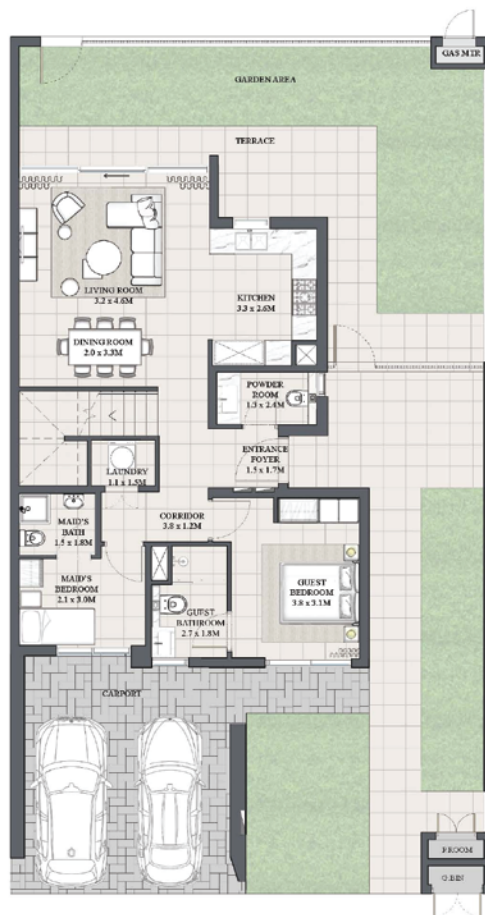
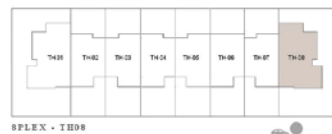
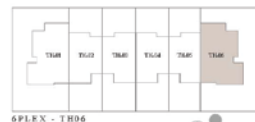
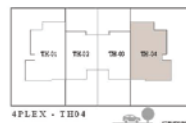
# ANYA 2

ARABIAN RANCHES III

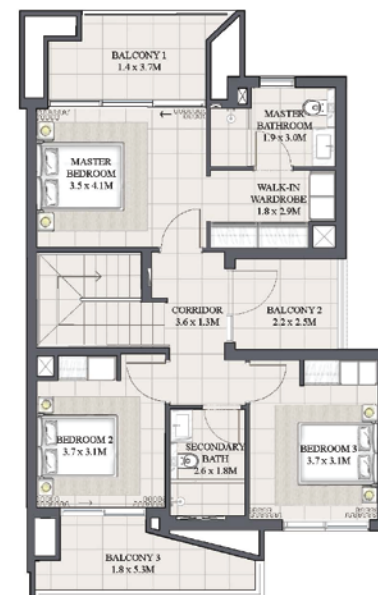
## ARIA TOWNHOUSE 4 BEDROOM 1M MIRRORED

UNIT	TOTAL AREA	
4PLEX - TH04		
6PLEX - TH06	2462.67 SQFT	228.79 SQM
8PLEX - TH08		

### KEY PLAN



GROUND FLOOR



FIRST FLOOR

FLOOR PLAN 1. All dimensions are in imperial and metric, and measured from finish to finish excluding construction tolerances. 2. All materials, dimensions, and drawings are approximate only. 3. Information is subject to change without notice, at developer's absolute discretion. 4. Actual area may vary from the stated area. 5. Drawings not to scale. 6. All images used are for illustrative purposes only and do not represent the actual size, features, specifications, fittings, and furnishings. 7. The developer reserves the right to make revisions / alterations, at its absolute discretion, without any liability whatsoever.

EMAAR

# ANYA 2

ARABIAN RANCHES III

ARIA

TOWNHOUSE

3 BEDROOM 1

UNIT	TOTAL AREA	
4 PLEX - TH02		
6 PLEX - TH02	1991.11 SQFT	184.98 SQM
8 PLEX - TH02		

## KEY PLAN



GROUND FLOOR



FIRST FLOOR

FLOOR PLAN 1. All dimensions are in imperial and metric, and measured from finish to finish excluding construction tolerances. 2. All materials, dimensions, and drawings are approximate only. 3. Information is subject to change without notice, at developer's absolute discretion. 4. Actual area may vary from the stated area. 5. Drawings not to scale. 6. All images used are for illustrative purposes only and do not represent the actual size, features, specifications, fittings, and furnishings. 7. The developer reserves the right to make revisions / alterations, at it's absolute discretion, without any liability whatsoever.

EMAAR



# ANYA 2

ARABIAN RANCHES III

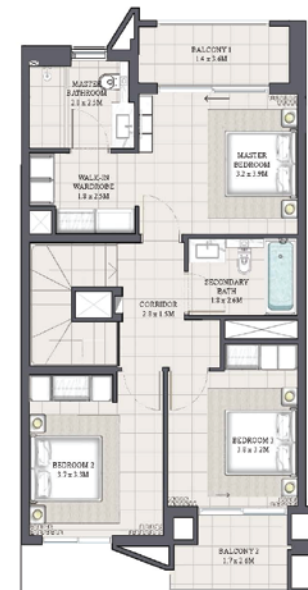
ARIA

TOWNHOUSE

3 BEDROOM 2

UNIT	TOTAL AREA	
6PLEX - TH03	1985.29 SQFT	184.44 SQM
8PLEX - TH03	1985.19 SQFT	184.43 SQM
8PLEX - TH05	1988.74 SQFT	184.76 SQM

KEY PLAN



FLOOR PLAN 1. All dimensions are in imperial and metric, and measured from finish to finish excluding construction tolerances. 2. All materials, dimensions, and drawings are approximate only. 3. Information is subject to change without notice, at developer's absolute discretion. 4. Actual area may vary from the stated area. 5. Drawings not to scale. 6. All images used are for illustrative purposes only and do not represent the actual size, features, specifications, fittings, and furnishings. 7. The developer reserves the right to make revisions / alterations, at it's absolute discretion, without any liability whatsoever.

EMAAR

# ANYA 2

ARABIAN RANCHES III

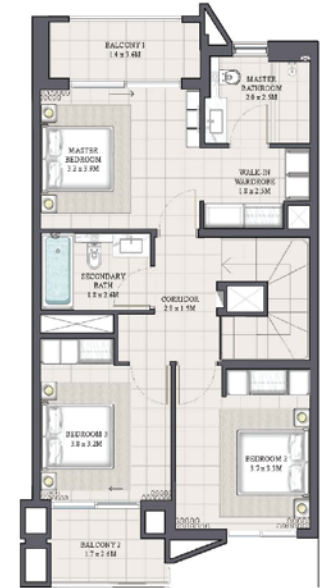
## ARIA TOWNHOUSE 3 BEDROOM 2 M MIRRORED

UNIT	TOTAL AREA	
6 PLEX - TH04	1988.74 SQFT	184.76 SQM
8 PLEX - TH04	1985.19 SQFT	184.43 SQM

### KEY PLAN



GROUND FLOOR



FIRST FLOOR

FLOOR PLAN 1. All dimensions are in imperial and metric, and measured from finish to finish excluding construction tolerances. 2. All materials, dimensions, and drawings are approximate only. 3. Information is subject to change without notice, at developer's absolute discretion. 4. Actual area may vary from the stated area. 5. Drawings not to scale. 6. All images used are for illustrative purposes only and do not represent the actual size, features, specifications, fittings, and furnishings. 7. The developer reserves the right to make revisions / alterations, at it's absolute discretion, without any liability whatsoever.

EMAAR

# ANYA 2

ARABIAN RANCHES III

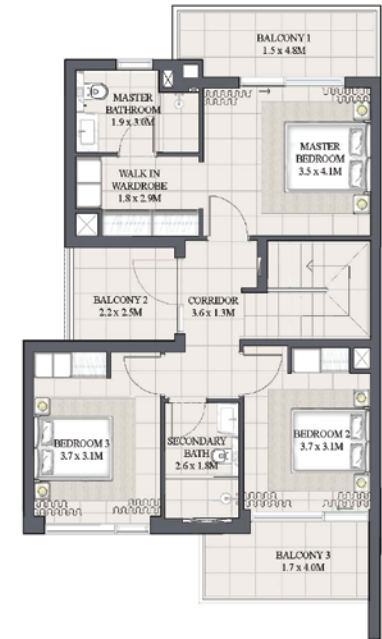
## IRIS TOWNHOUSE 4 BEDROOM 1

UNIT	TOTAL AREA	
4PLEX - TH01		
6PLEX - TH01	2457.29 SQFT	228.29 SQM
8PLEX - TH01		

### KEY PLAN



GROUND FLOOR



FIRST FLOOR

FLOOR PLAN 1. All dimensions are in imperial and metric, and measured from finish to finish excluding construction tolerances. 2. All materials, dimensions, and drawings are approximate only. 3. Information is subject to change without notice, at developer's absolute discretion. 4. Actual area may vary from the stated area. 5. Drawings not to scale. 6. All images used are for illustrative purposes only and do not represent the actual size, features, specifications, fittings, and furnishings. 7. The developer reserves the right to make revisions / alterations, at its absolute discretion, without any liability whatsoever.

EMAAR

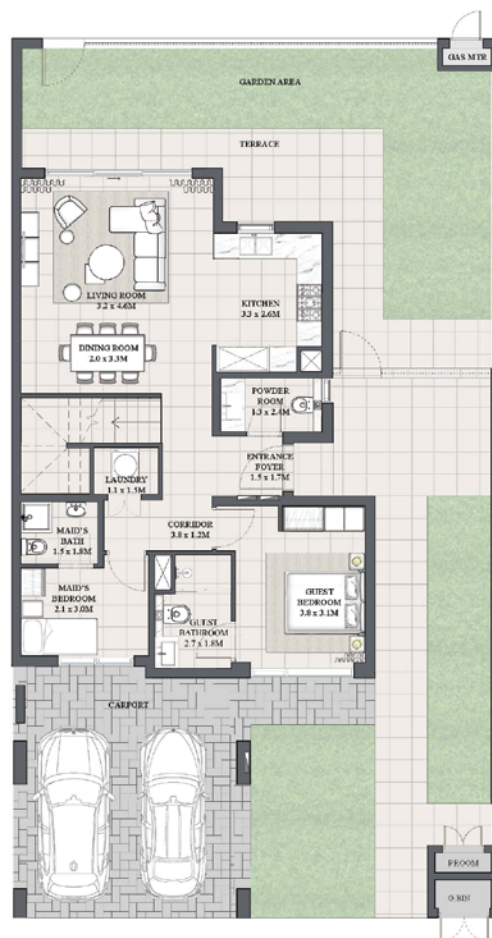
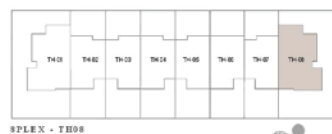
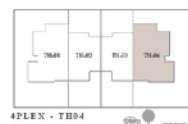
# ANYA 2

ARABIAN RANCHES III

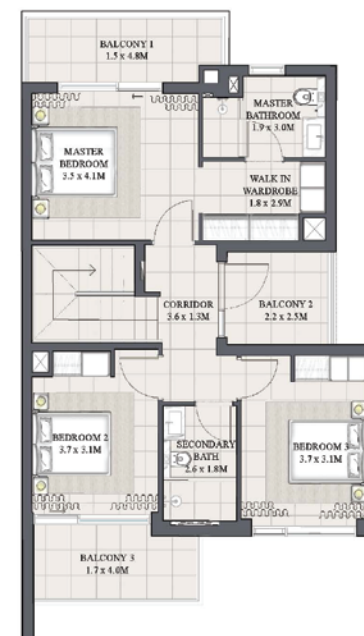
## IRIS TOWNHOUSE 4 BEDROOM 1M MIRRORED

UNIT	TOTAL AREA	
4PLEX - TH04		
6PLEX - TH06	2457.29 SQFT	228.29 SQM
8PLEX - TH08		

### KEY PLAN



GROUND FLOOR



FIRST FLOOR

FLOOR PLAN 1. All dimensions are in imperial and metric, and measured from finish to finish excluding construction tolerances. 2. All materials, dimensions, and drawings are approximate only. 3. Information is subject to change without notice, at developer's absolute discretion. 4. Actual area may vary from the stated area. 5. Drawings not to scale. 6. All images used are for illustrative purposes only and do not represent the actual size, features, specifications, fittings, and furnishings. 7. The developer reserves the right to make revisions / alterations, at its absolute discretion, without any liability whatsoever.

# ANYA 2

ARABIAN RANCHES III

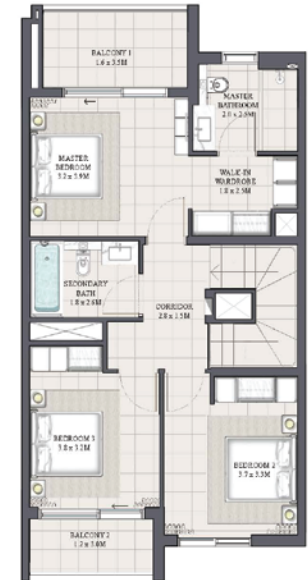
## IRIS TOWNHOUSE 3 BEDROOM 1

UNIT	TOTAL AREA	
4PLEX - TH02		
6PLEX - TH02	2038.79 SQFT	189.41 SQM
8PLEX - TH02		

### KEY PLAN



GROUND FLOOR



FIRST FLOOR

FLOOR PLAN 1. All dimensions are in imperial and metric, and measured from finish to finish excluding construction tolerances. 2. All materials, dimensions, and drawings are approximate only. 3. Information is subject to change without notice, at developer's absolute discretion. 4. Actual area may vary from the stated area. 5. Drawings not to scale. 6. All images used are for illustrative purposes only and do not represent the actual size, features, specifications, fittings, and furnishings. 7. The developer reserves the right to make revisions / alterations, at it's absolute discretion, without any liability whatsoever.

# ANYA 2

ARABIAN RANCHES III

## IRIS TOWNHOUSE 3 BEDROOM 1M MIRRORED

UNIT	TOTAL AREA	
4 PLEX - TH03		
6 PLEX - TH05	2038.79 SQFT	189.41 SQM
8 PLEX - TH07		

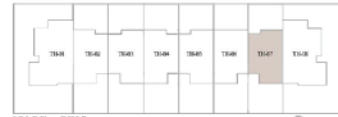
### KEY PLAN



4 PLEX - TH03



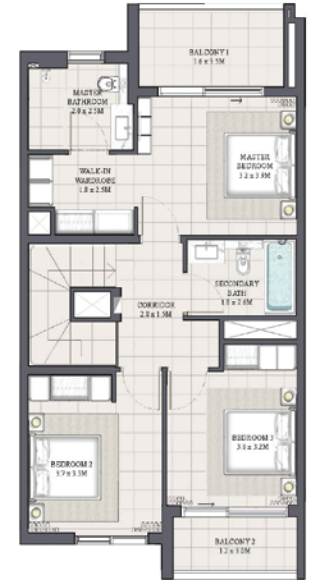
6 PLEX - TH05



8 PLEX - TH07



GROUND FLOOR



FIRST FLOOR

FLOOR PLAN 1. All dimensions are in imperial and metric, and measured from finish to finish excluding construction tolerances. 2. All materials, dimensions, and drawings are approximate only. 3. Information is subject to change without notice, at developer's absolute discretion. 4. Actual area may vary from the stated area. 5. Drawings not to scale. 6. All images used are for illustrative purposes only and do not represent the actual size, features, specifications, fittings, and furnishings. 7. The developer reserves the right to make revisions / alterations, at it's absolute discretion, without any liability whatsoever.

# ANYA 2

ARABIAN RANCHES III

IRIS

TOWNHOUSE

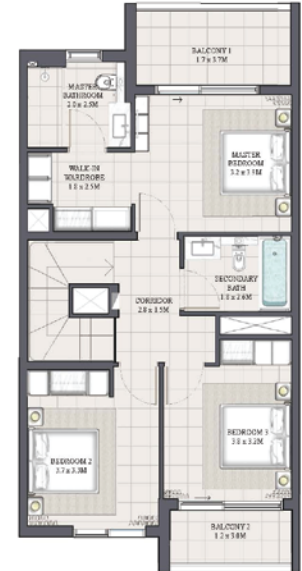
3 BEDROOM 2

UNIT	TOTAL AREA	
6PLEX - TH03		
8PLEX - TH03	2036.42 SQFT	189.19 SQM
8PLEX - TH05		

### KEY PLAN



### GROUND FLOOR



FIRST FLOOR

FLOOR PLAN 1. All dimensions are in imperial and metric, and measured from finish to finish excluding construction tolerances. 2. All materials, dimensions, and drawings are approximate only. 3. Information is subject to change without notice, at developer's absolute discretion. 4. Actual area may vary from the stated area. 5. Drawings not to scale. 6. All images used are for illustrative purposes only and do not represent the actual size, features, specifications, fittings, and furnishings. 7. The developer reserves the right to make revisions / alterations, at it's absolute discretion, without any liability whatsoever.

**EMAAR**

# ANYA 2

ARABIAN RANCHES III

IRIS

TOWNHOUSE

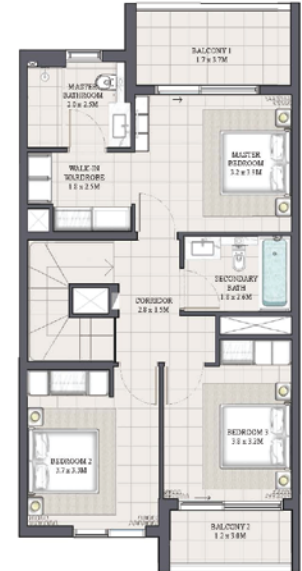
3 BEDROOM 2

UNIT	TOTAL AREA	
6PLEX - TH03		
8PLEX - TH03	2036.42 SQFT	189.19 SQM
8PLEX - TH05		

### KEY PLAN



### GROUND FLOOR



FIRST FLOOR

FLOOR PLAN 1. All dimensions are in imperial and metric, and measured from finish to finish excluding construction tolerances. 2. All materials, dimensions, and drawings are approximate only. 3. Information is subject to change without notice, at developer's absolute discretion. 4. Actual area may vary from the stated area. 5. Drawings not to scale. 6. All images used are for illustrative purposes only and do not represent the actual size, features, specifications, fittings, and furnishings. 7. The developer reserves the right to make revisions / alterations, at it's absolute discretion, without any liability whatsoever.

**EMAAR**

# ANYA 2

ARABIAN RANCHES III

FOR MORE INFORMATION PLEASE CONTACT



+971 55 476 7630  
+971 4 368 7878  
info@afsrealestate.com  
www.afsrealestate.com



+971 50 674 2020  
+971 4 368 7878  
info@dubricks.com  
www.dubricks.com

EMAAR